

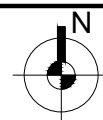
# MCC NAHAN

Sheet No. Sheet Title

01 SITE PLAN

Scale 1:100

29 Oct 2018

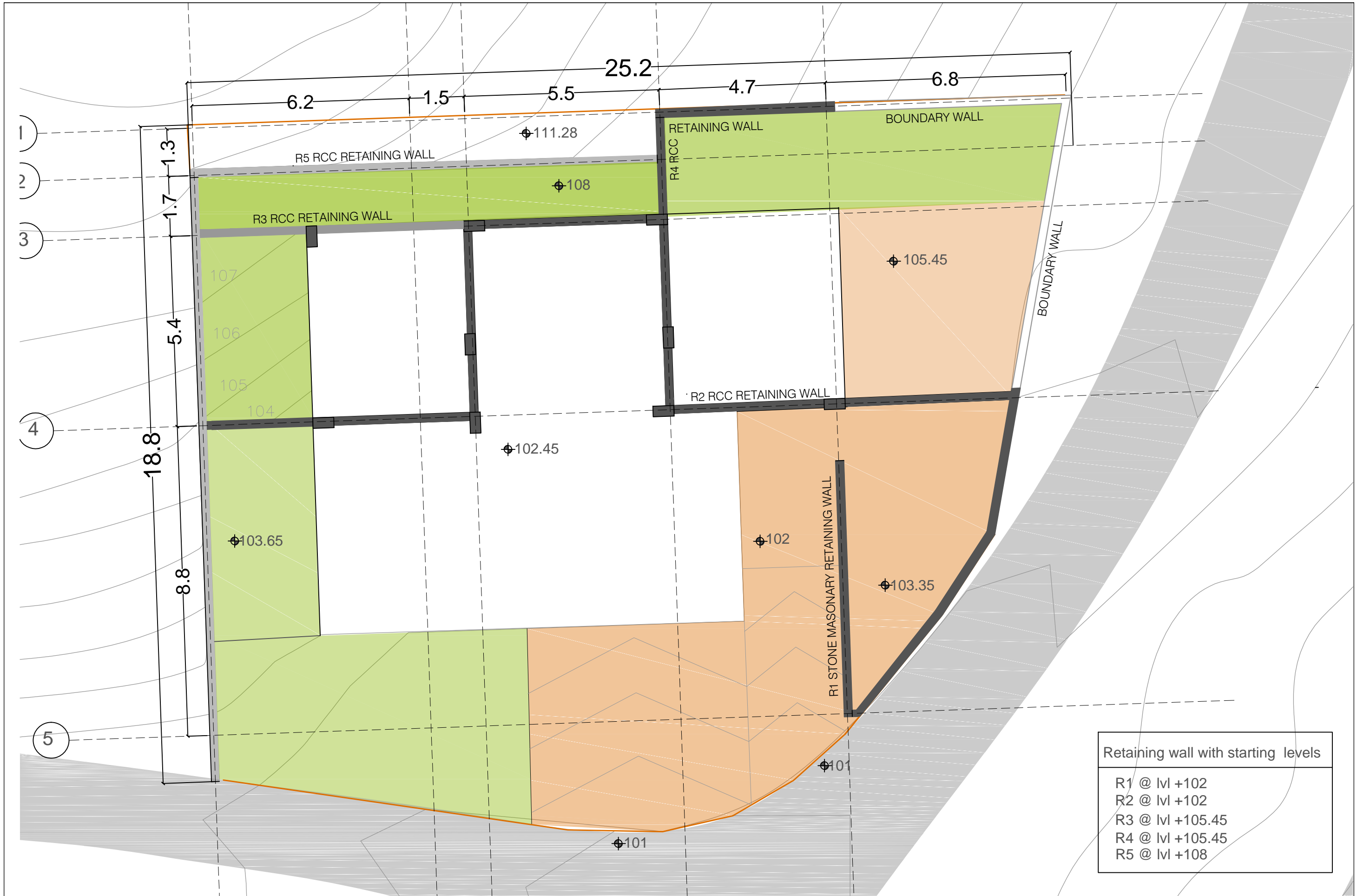


Notes-

- 1.All dimensions are in m unless otherwise specified.
- 2.Level 00 ground floor plinth level corresponds to lvl 102.45.

Drawn by Neha Bisht

Architect Hitanshu Jishtu  
RODIC Consultants



Retaining wall with starting levels	
R1	@ Ivl +102
R2	@ Ivl +102
R3	@ Ivl +105.45
R4	@ Ivl +105.45
R5	@ Ivl +108

# MCC NAHAN

Sheet No.

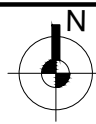
02

Sheet Title

RETAINING WALL DETAIL

Scale 1:100

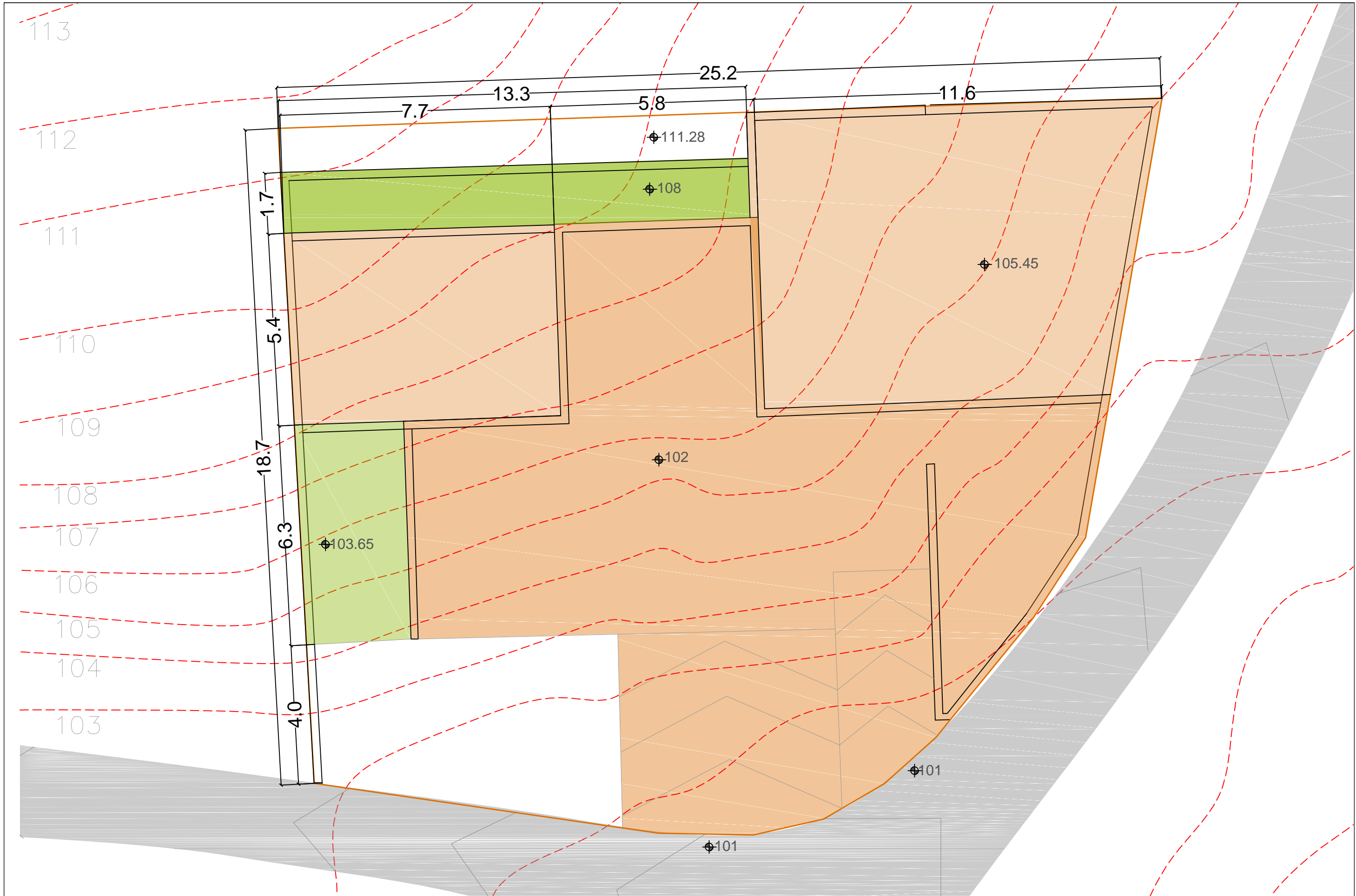
29 Oct 2018



Notes-  
1.All dimensions are in m unless otherwise specified.  
2.Level 00 ground floor plinth level corresponds to Ivl 102.45.

Drawn by Neha Bisht

Architect Hitanshu Jishtu  
RODIC Consultants



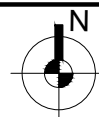
# MCC NAHAN

Sheet No. Sheet Title

**03** EXCAVATION

Scale 1:100

29 Oct 2018

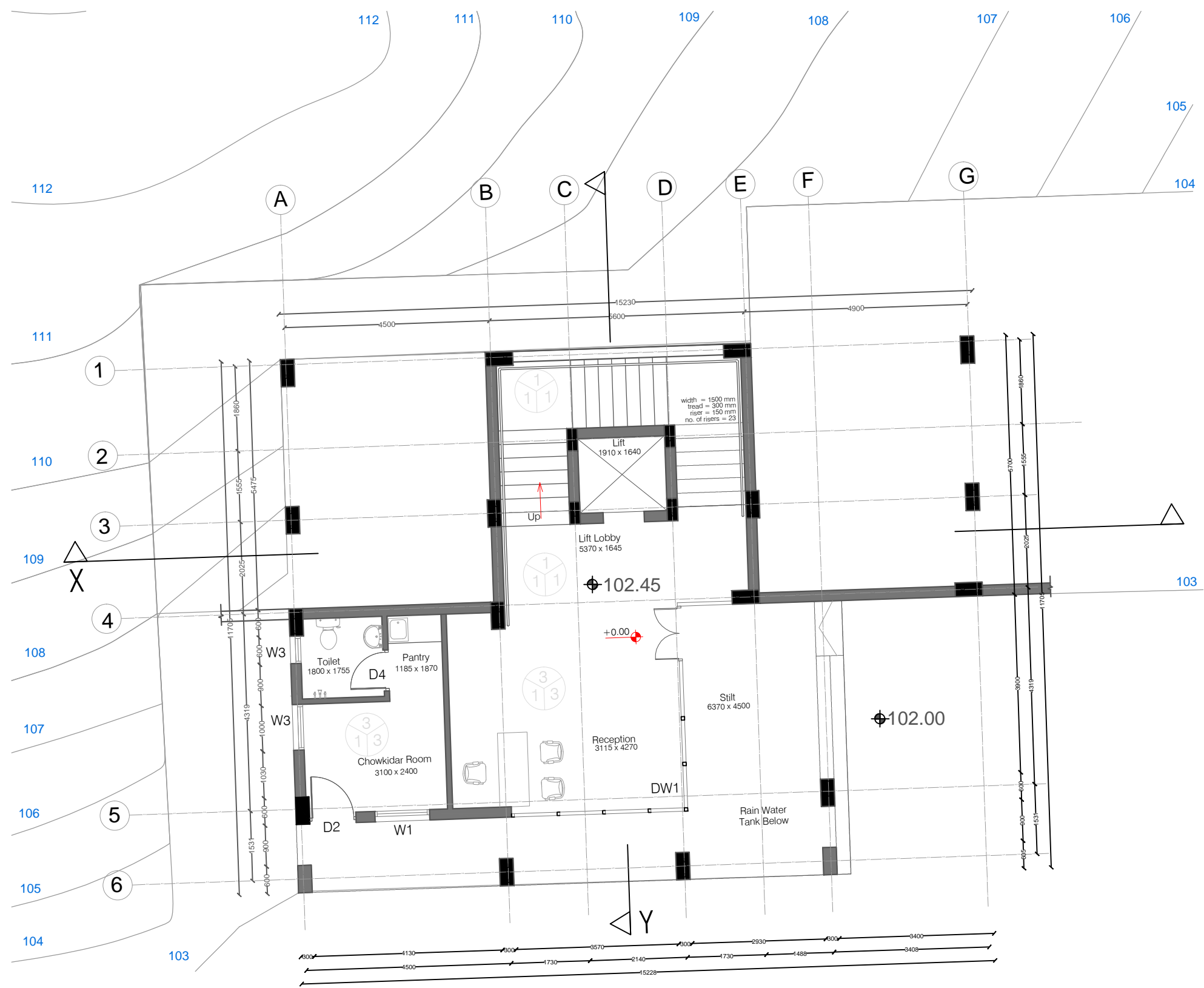


Notes-

- 1.All dimensions are in m unless otherwise specified.
- 2.Level 00 ground floor plinth level corresponds to lvl 102.45.

Drawn by Neha Bisht

Architect Hitanshu Jishtu  
**RODIC Consultants**



<div><div>F</div><div>S</div><div>W</div></div> <div>F = Flooring S = Skirting / Dado W = Wall Finishing</div>
<div>F= FLOORING</div> <div>1= Kota Flooring 2= Cement Flooring 3= Vitrified Tile Flooring 4= Ceramic Tile Flooring 5= Terrazo Flooring 6= 50 mm CC Flooring with Hardener toping</div>
<div>S= SKIRTING / DADO</div> <div>1= Kota Skirting 2= Cement Skirting 3= Vitrified Skirting 4= White Glazed Tile 5= Terrazo Skirting</div>
<div>W= WALL FINISHING</div> <div>1= Wall Putty + Acrylic Emulsion 2= Wall Putty + Weather Proof Exterior grade Emulsion</div>

Total Floor Area- 75 sq m.

# MCC NAHAN

Sheet No.

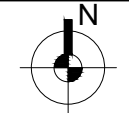
04

Sheet Title

LOWER GROUND FLOOR PLAN

Scale 1:100

29 Oct 2018



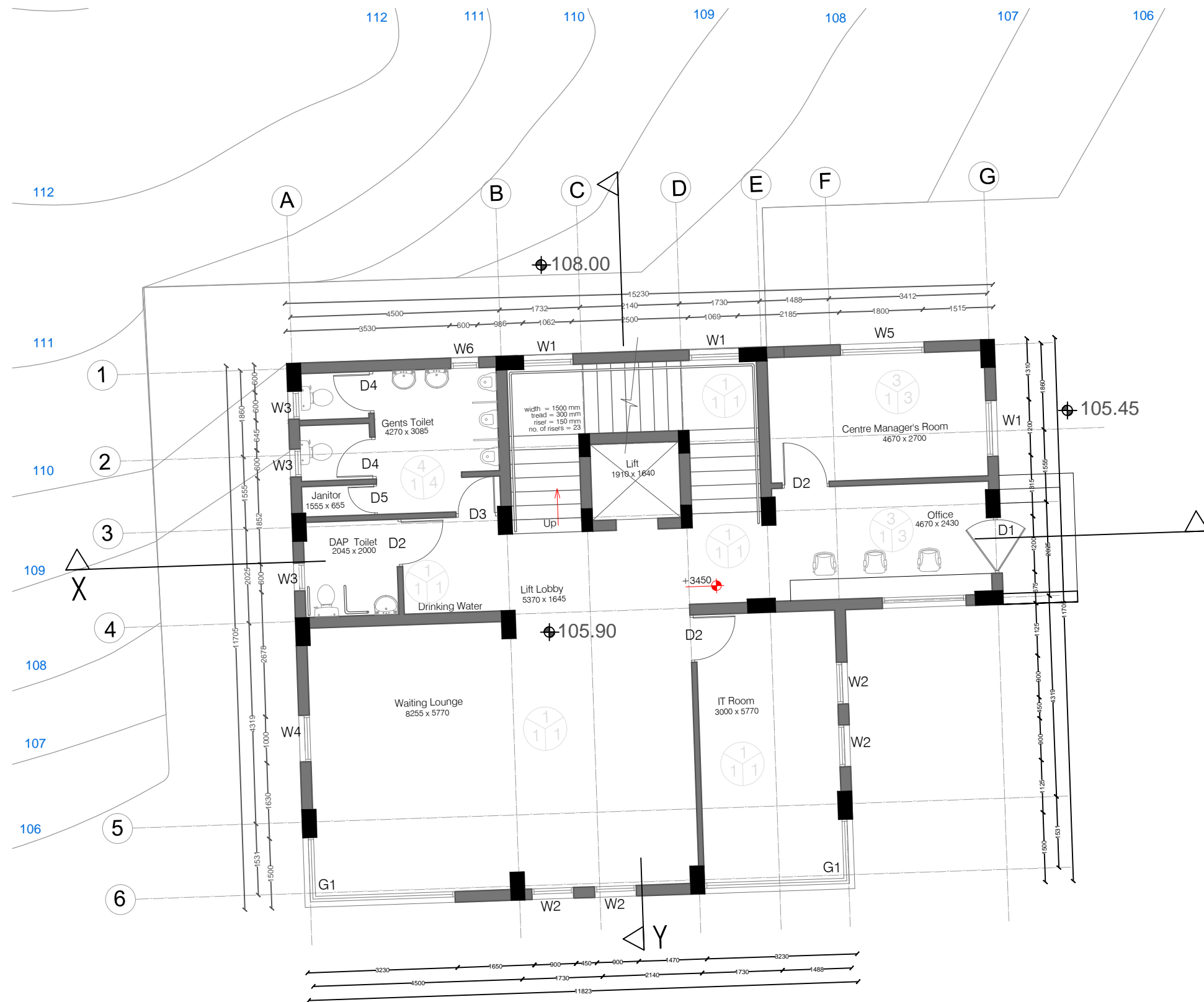
Notes-

- 1.All dimensions are in m unless otherwise specified.
- 2.Level 00 ground floor plinth level corresponds to lvl 102.45.

Drawn by Neha Bisht

Architect Hitanshu Jishtu

RODIC Consultants



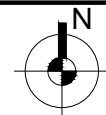
Total Floor Area- 165 sq m.

	<p>F= Flooring S= Skirting / Dado W= Wall Finishing</p>
<p><u>F= FLOORING</u></p>	<p>1= Kota Flooring 2= Cement Flooring 3= Vitrified Tile Flooring 4= Ceramic Tile Flooring 5= Terrazzo Flooring 6= 50 mm CC Flooring with Hardener topping</p>
<p><u>S= SKIRTING / DADO</u></p>	<p>1= Kota Skirting 2= Cement Skirting 3= Vitrified Skirting 4= White Glazed Tile 5= Terrazzo Skirting</p>
<p><u>W= WALL FINISHING</u></p>	<p>1= Wall Putty + Acrylic Emulsion 2= Wall Putty + Weather Proof Exterior grade Emulsion</p>

# MCC NAHAN

Sheet No. **05** Sheet Title **UPPER GROUND FLOOR PLAN**

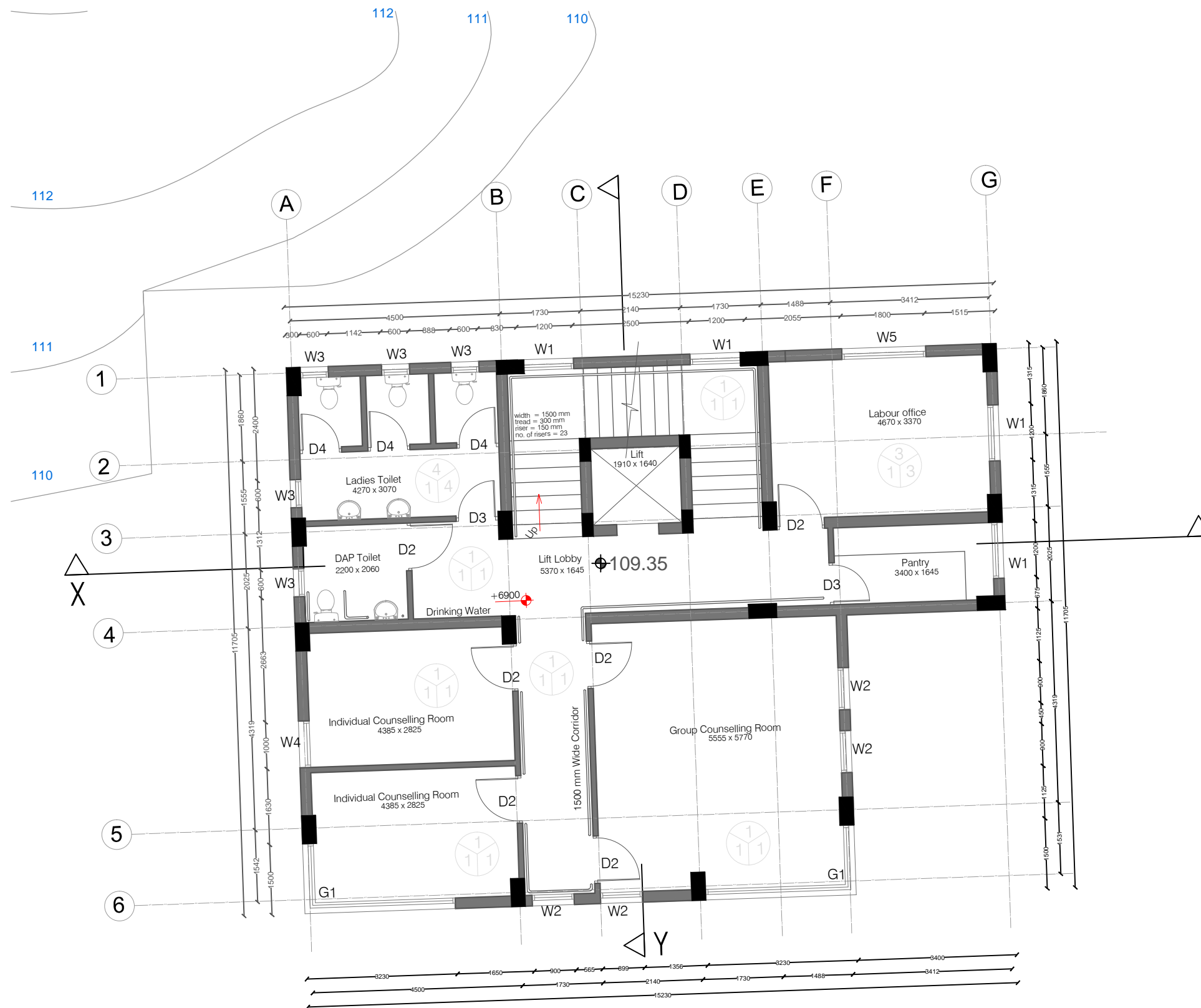
Scale 1:100  
29 Oct 2018



Notes-  
1.All dimensions are in m unless otherwise specified.  
2.Level 00 ground floor plinth level corresponds to Ivl 102.45.

Drawn by Neha Bisht  
Architect Hitanshu Jishtu  
**RODIC Consultants**





Total Floor Area- 165 sq m.

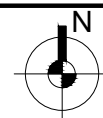
# MCC NAHAN

Sheet No. Sheet Title

**06** FIRST FLOOR PLAN

Scale 1:100

29 Oct 2018



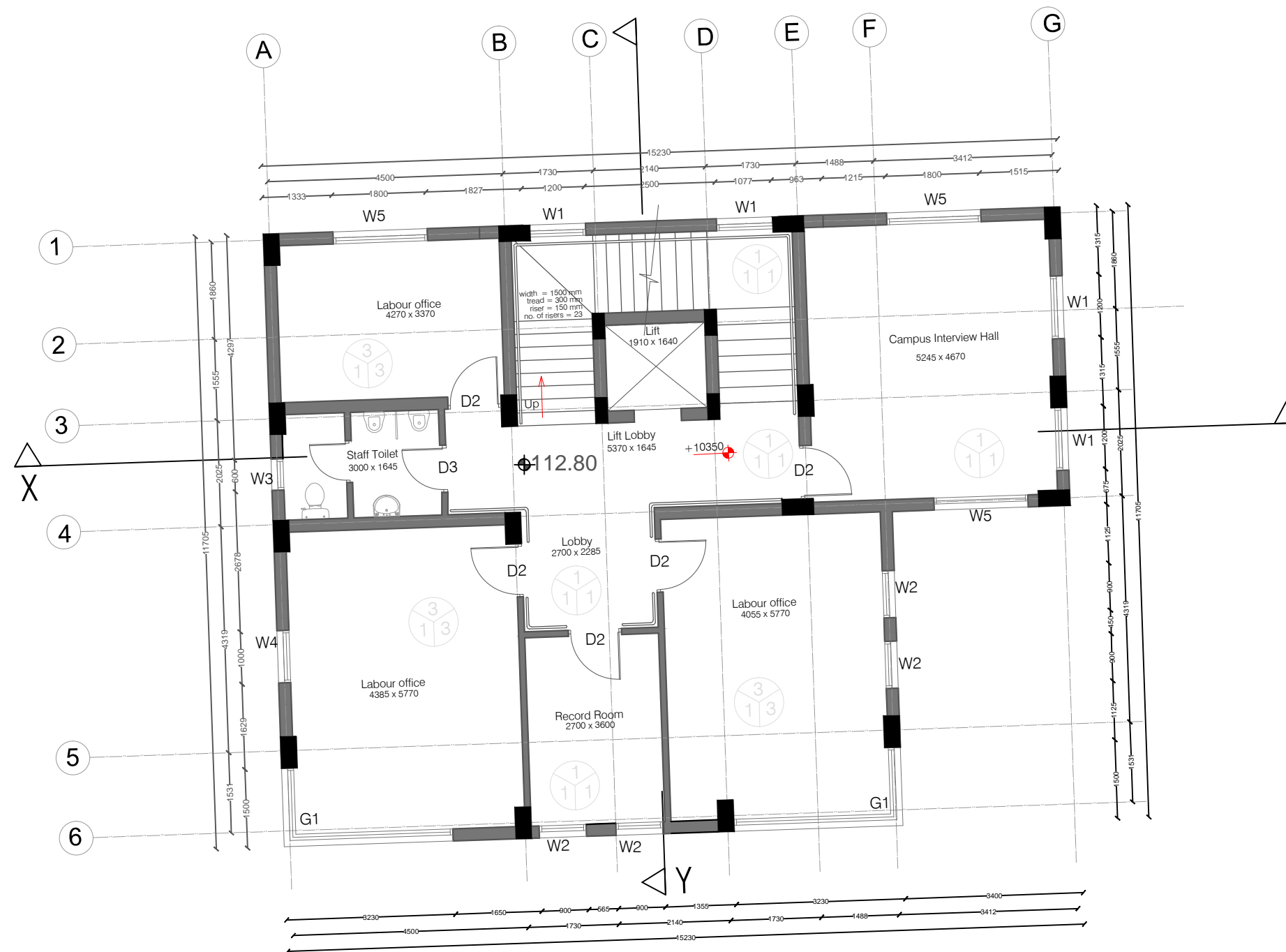
Notes-

- 1.All dimensions are in m unless otherwise specified.
- 2.Level 00 ground floor plinth level corresponds to Ivl 102.45.

<div> <div>F</div> <div>S</div> <div>W</div> </div>	F= Flooring S= Skirting / Dado W= Wall Finishing
<b>F= FLOORING</b>	1= Kota Flooring 2= Cement Flooring 3= Vitrified Tile Flooring 4= Ceramic Tile Flooring 5= Terrazo Flooring 6= 50 mm CC Flooring with Hardener toping
<b>S= SKIRTING / DADO</b>	1= Kota Skirting 2= Cement Skirting 3= Vitrified Skirting 4= White Glazed Tile 5= Terrazo Skirting
<b>W= WALL FINISHING</b>	1= Wall Putty + Acrylic Emulsion 2= Wall Putty + Weather Proof Exterior grade Emulsion

Drawn by Neha Bisht

Architect Hitanshu Jishtu  
**RODIC Consultants**



Total Floor Area- 165 sq m.

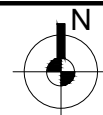
# MCC NAHAN

Sheet No. Sheet Title

**07** SECOND FLOOR PLAN

Scale 1:100

29 Oct 2018

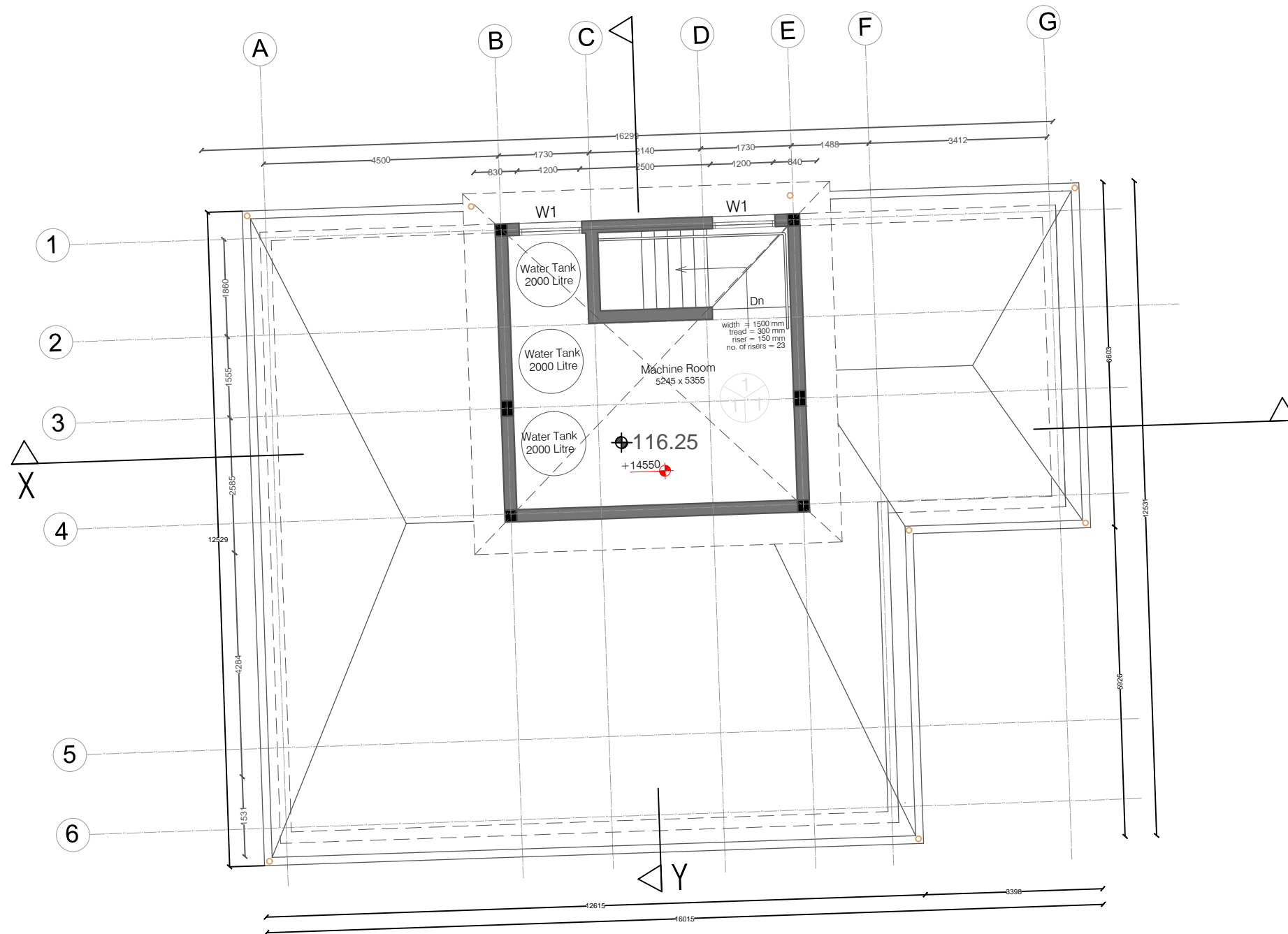


Notes-  
1.All dimensions are in m unless otherwise specified.  
2.Level 00 ground floor plinth level corresponds to lvl 102.45.

<div> <div>F</div> <div>S</div> <div>W</div> </div>	F= Flooring S= Skirting / Dado W= Wall Finishing
<b>F= FLOORING</b>	1= Kota Flooring 2= Cement Flooring 3= Vitrified Tile Flooring 4= Ceramic Tile Flooring 5= Terrazo Flooring 6= 50 mm CC Flooring with Hardener toping
<b>S= SKIRTING / DADO</b>	1= Kota Skirting 2= Cement Skirting 3= Vitrified Skirting 4= White Glazed Tile 5= Terrazo Skirting
<b>W= WALL FINISHING</b>	1= Wall Putty + Acrylic Emulsion 2= Wall Putty + Weather Proof Exterior grade Emulsion

Drawn by Neha Bisht

Architect Hitanshu Jishtu  
**RODIC Consultants**



Total Floor Area- 28 sq m.

<div><div>F</div><div>S</div><div>W</div></div> <div>F = Flooring S = Skirting / Dado W = Wall Finishing</div>
<div>F = FLOORING</div> <div>1 = Kota Flooring 2 = Cement Flooring 3 = Vitrified Tile Flooring 4 = Ceramic Tile Flooring 5 = Terrazo Flooring 6 = 50 mm CC Flooring with Hardener topping</div>
<div>S = SKIRTING / DADO</div> <div>1 = Kota Skirting 2 = Cement Skirting 3 = Vitrified Skirting 4 = White Glazed Tile 5 = Terrazo Skirting</div>
<div>W = WALL FINISHING</div> <div>1 = Wall Putty + Acrylic Emulsion 2 = Wall Putty + Weather Proof Exterior grade Emulsion</div>

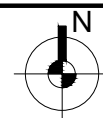
# MCC NAHAN

Sheet No. Sheet Title

08 MUMTY PLAN

Scale 1:100

29 Oct 2018



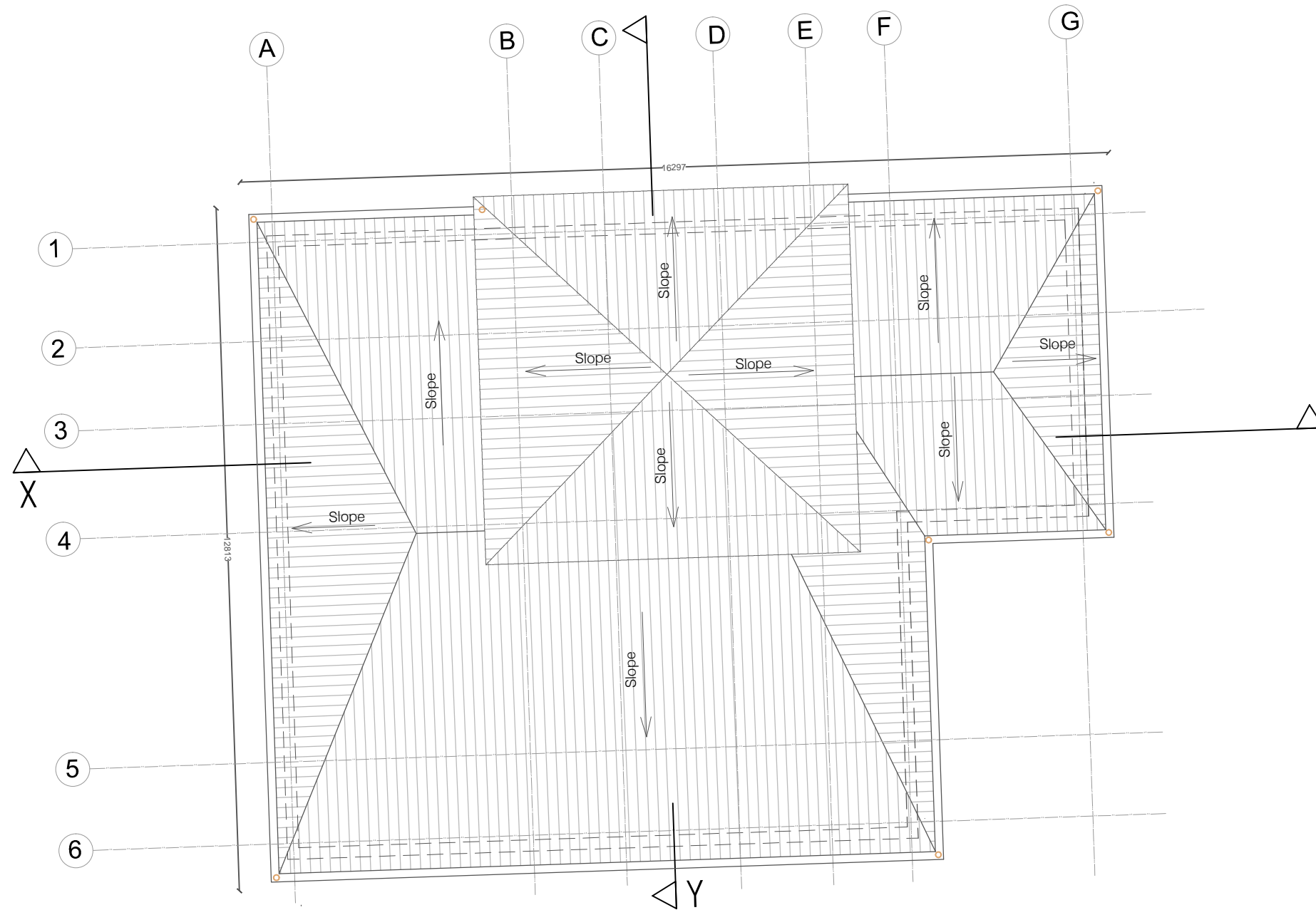
Notes-

- 1.All dimensions are in m unless otherwise specified.
- 2.Level 00 ground floor plinth level corresponds to lvl 102.45.

Drawn by Neha Bisht

Architect Hitanshu Jishtu  
RODIC Consultants





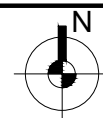
# MCC NAHAN

Sheet No. Sheet Title

**09** ROOF PLAN

Scale 1:100

29 Oct 2018



Notes-

- 1.All dimensions are in m unless otherwise specified.
- 2.Level 00 ground floor plinth level corresponds to Ivl 102.45.

Drawn by Neha Bisht

Architect Hitanshu Jishtu  
**RODIC Consultants**



# MCC NAHAN

Sheet No. Sheet Title

10 FRONT ELEVATION

Scale 1:100

29 Oct 2018

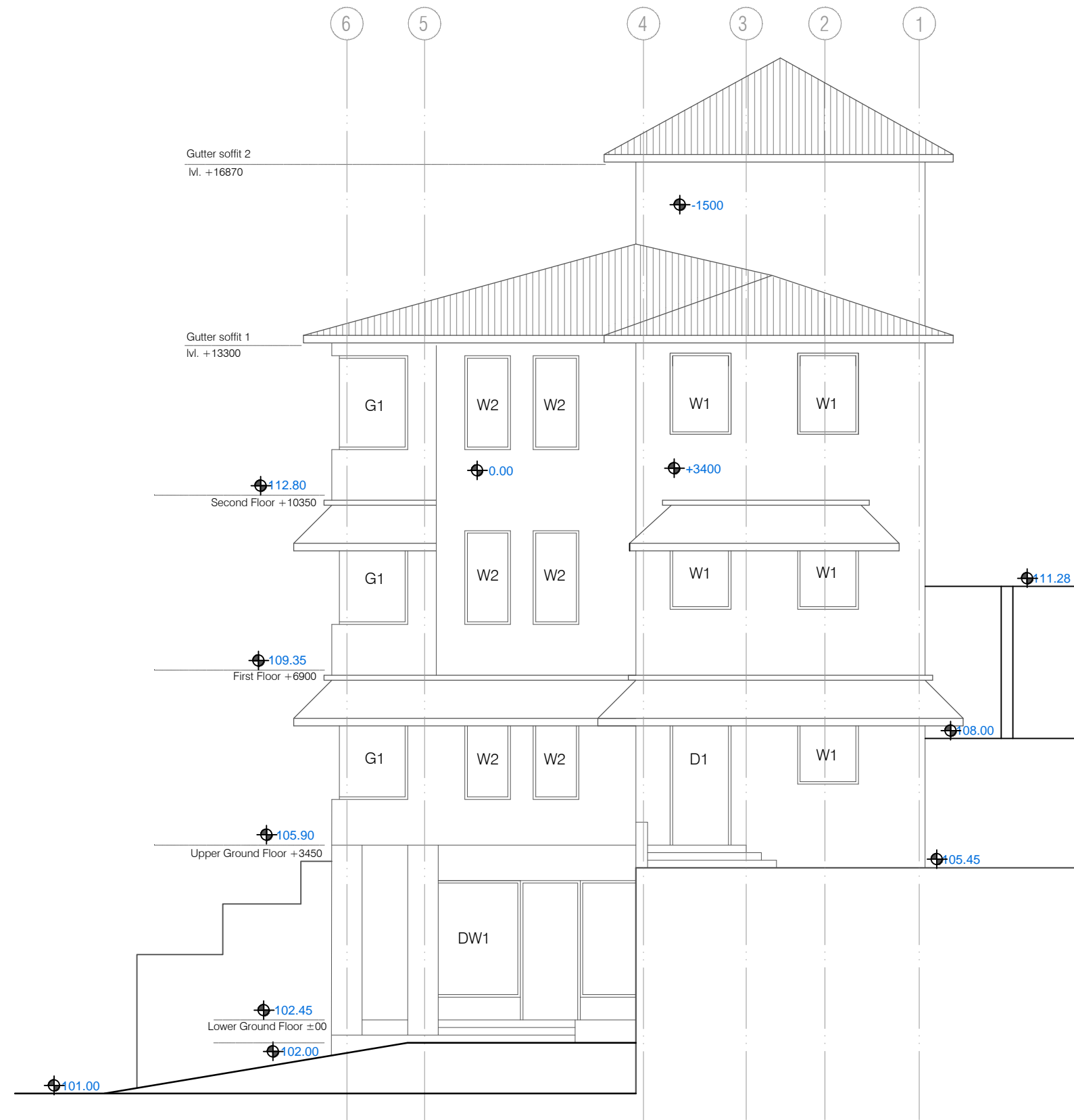
Notes-

1.All dimensions are in m unless otherwise specified.

2.Level 00 ground floor plinth level corresponds to lvl 102.45.

Drawn by Neha Bisht

Architect Hitanshu Jishtu  
RODIC Consultants



# MCC NAHAN

Sheet No. Sheet Title

11 EAST ELEVATION

Scale 1:100

29 Oct 2018

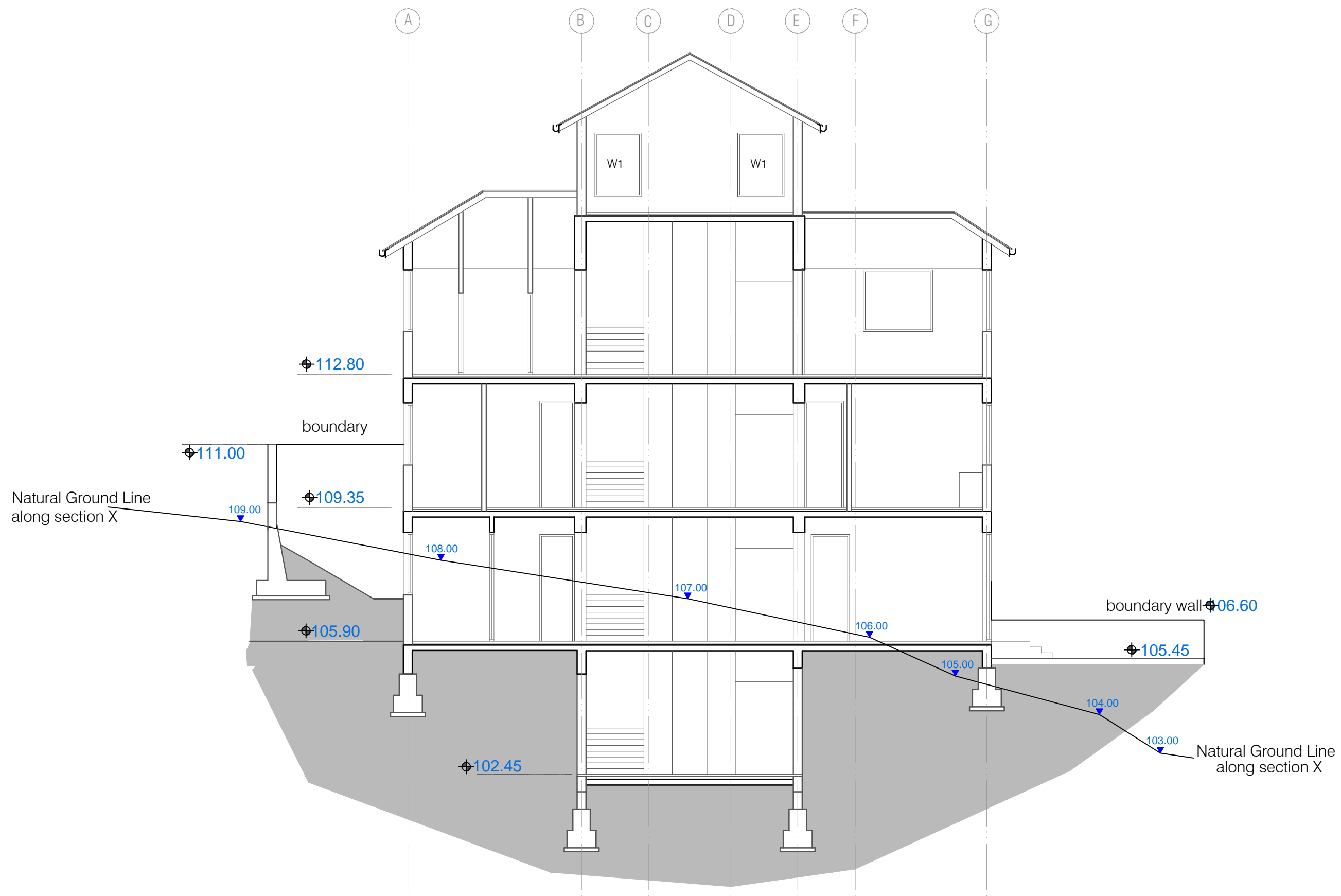
Notes-

1.All dimensions are in m unless otherwise specified.

2.Level 00 ground floor plinth level corresponds to lvl 102.45.

Drawn by Neha Bisht

Architect Hitanshu Jishtu  
RODIC Consultants



# MCC NAHAN

Sheet No. Sheet Title

12 SECTION X

Scale 1:100

29 Oct 2018

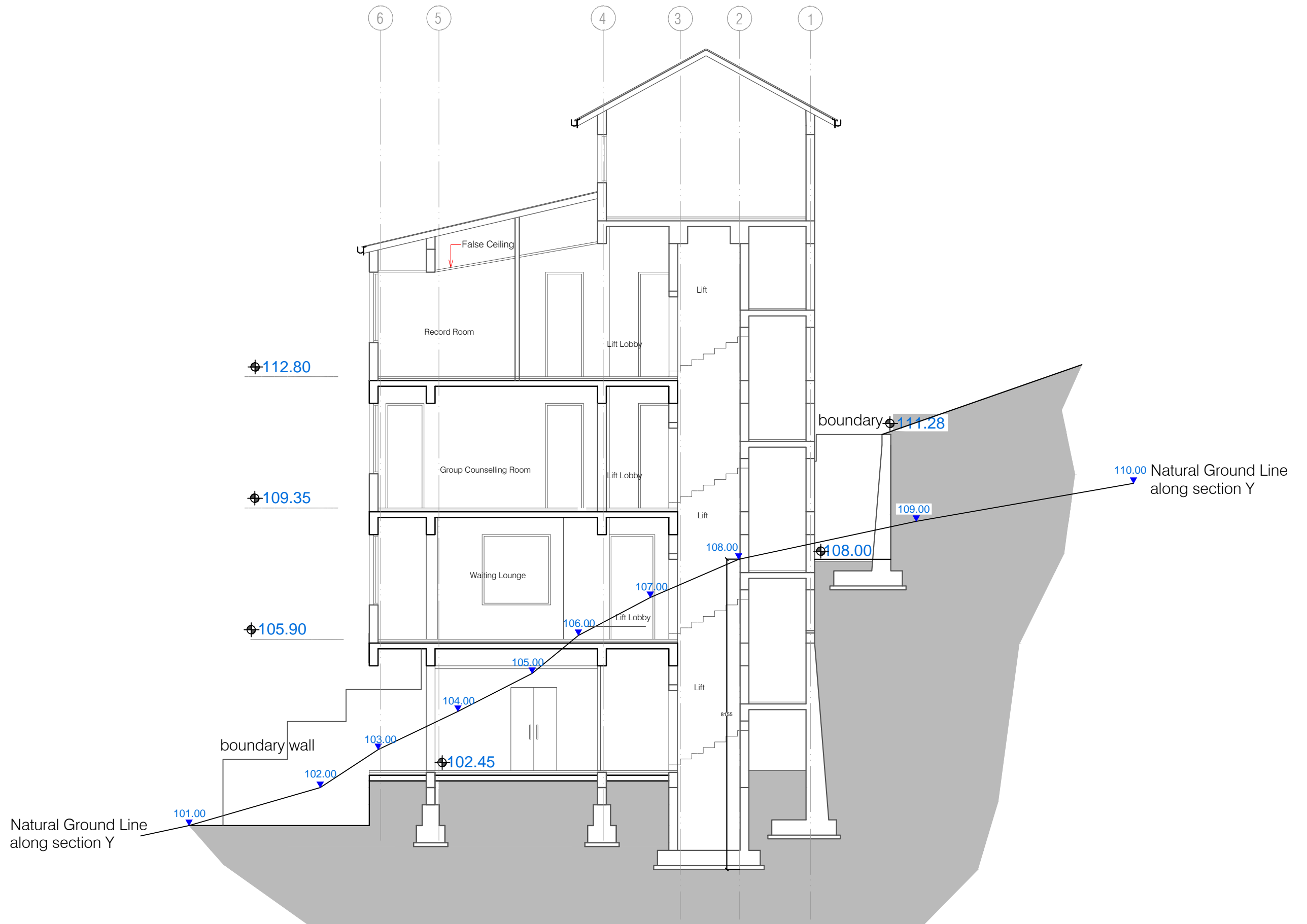
Notes-

1.All dimensions are in m unless otherwise specified.

2.Level 00 ground floor plinth level corresponds to lvl 102.45.

Drawn by Neha Bisht

Architect Hitanshu Jishtu  
RODIC Consultants



# MCC NAHAN

Sheet No. Sheet Title

13 SECTION Y

Scale 1:100

29 Oct 2018

Notes-

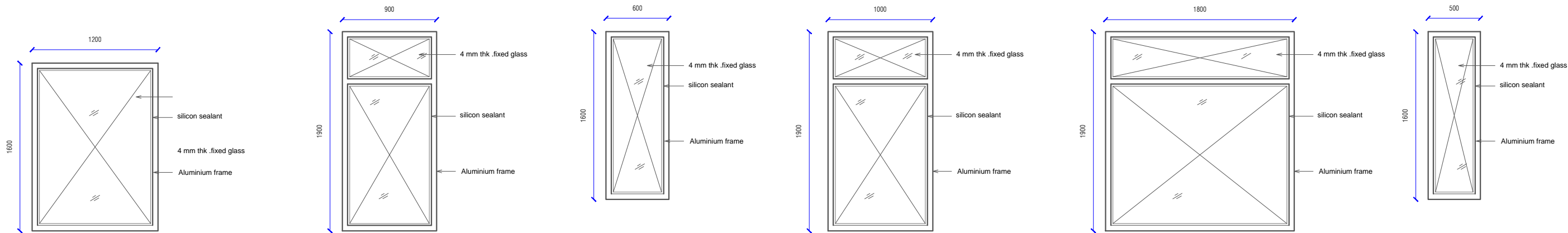
1.All dimensions are in m unless otherwise specified.

2.Level 00 ground floor plinth level corresponds to lvl 102.45.

Drawn by Neha Bisht

Architect Hitanshu Jishtu  
RODIC Consultants





W1  
( ALUMINIUM )

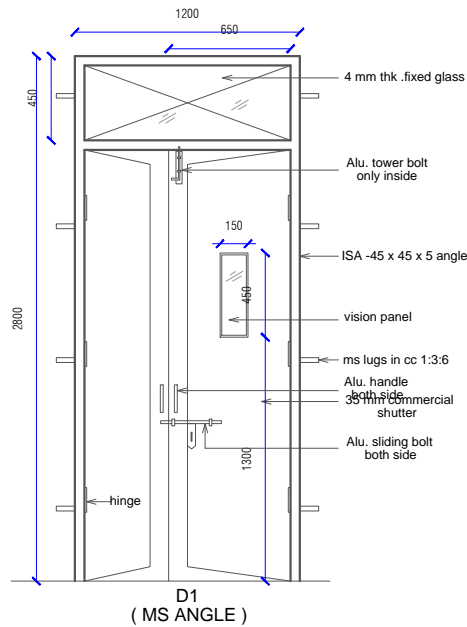
W2  
( ALUMINIUM )

W3  
( ALUMINIUM )

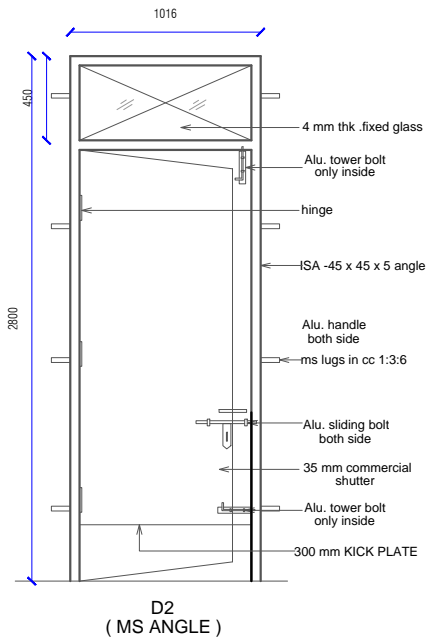
W4  
( ALUMINIUM )

W5  
( ALUMINIUM )

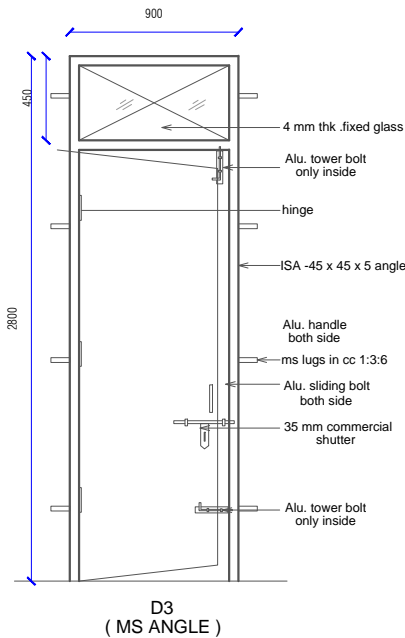
W6  
( ALUMINIUM )



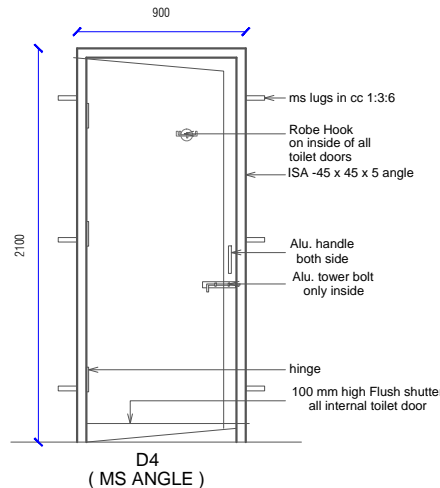
D1  
( MS ANGLE )



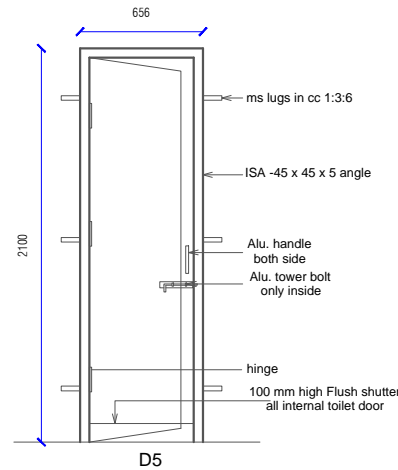
D2  
( MS ANGLE )



D3  
( MS ANGLE )



D4  
( MS ANGLE )



D5

DOORS + WINDOWS SCHEDULE									
MKD.	WIDTH	HEIGHT	CILL	REMARK	MKD.	WIDTH	HEIGHT	CILL	REMARK
DW1	4500 and 3870 and 1130	2800	00	Aluminium	W1	1200	1600	900	Aluminium
D1	1200	2800	00	MS Angle / Flush Shutter	W2	900	1900	900	Aluminium
D2	1016	2800	00	MS Angle / Flush Shutter	W3	600	1600	1200	Aluminium
D3	900	2800	00	MS Angle / Flush Shutter	W4	1000	1900	900	Aluminium
D4	900	2100	00	MS Angle / Flush Shutter	W5	1800	1900	900	Aluminium
D5	656	2100	00	MS Angle / Flush Shutter	W6	500	1600	1200	MS Hollow Section
Note :- All Steel Windows should have inside Wire mesh Shutter.					G1	3230 and 1500	2500	900	Aluminium

MCC NAHAN

Sheet No. Sheet Title

14

DOOR WINDOW SCHEDULE

29 Oct 2018

Notes-  
1.All dimensions are in m unless otherwise specified.  
2.Level 00 ground floor plinth level corresponds to lvl 102.45.

Drawn by Neha Bisht

Architect Hitanshu Jishtu  
RODIC Consultants

SPECIFICATION

<u>Reinforcement Cement Concrete (R.C.C.)</u>	Cement concrete 1:1.5:3 (One cement one and half sand : three graded stone aggregate 20nm nominal size)	<u>Aluminium Work</u>	Anodized aluminum work for doors, windows, ventilators and partitions with standard tubular sections appropriate z sections and other sections of approved make including necessary filling gaps at junctions at top bottom and sides with required PVC/neoprene/felt/ silicone sealant; aluminum sections shall be smooth rust free, straight mitred and jointed mechanically including cleat angle, snap beadingCP brass/ stainless steel screws complete as per drawings. Approved From this office.
<u>P.C.C.</u>	Cement concrete 1:4:8 (one cement: four sand: eight graded stone aggregate 40 mm nominal size)		
<u>D.P.C.</u>	Damp Proof Course 50mm thick with cement concrete 1:2:4 (1 cement :2 sand:4 graded stone aggregate 20mm nominal size)	<u>Doors Frame</u>	Angle iron door, window, clerestory window frame manufactured from steel section 40 x 40 x 6mm, including hinges jamb, lock jamb etc. Approved From this office.
<u>Plinth Protection</u>	1- Plinth protection 50mm thick in cement concrete 1:3:6 (1 cement: 3 sand : 6 Graded stone aggregate 20mm nominal size)	<u>Doors Shutter</u>	35 mm thick flush shutters, interior grade, commercial type, core of block board construction with frame of first class hard wood well matched commercial ply veneering , with vertical grains of cross ands and face veneers on both side. Approved From this office.
	2- Under layer for plinth protection of 75 mm thick (unconsolidated) bed of dry brick/ stone aggregate 40 mm nominal size rammed consolidated and grouted with fine sand including preparation of ground.	<u>Windows Frame</u>	M.S. tubular frames for windows and ventilators with hollow section as approved including MS flats with 15x3 mm lugs 10 mm long with bolts and nuts as required including fixing of necessary butt hinges and screws. Approved From this office.
	3- Brick edging (brick laid on edge) to plinth protection with bricks including grouting with cement mortar 1:4 (1 cement: 4 sand)	<u>Windows Shutter</u>	Steel glazed doors, windows and ventilators of standard rolled steel sections, z sections. Approved From this office.
		<u>Railing and Hand Rail</u>	Steel work welded in built up sections, trusses and framed work, including cutting, hoisting, fixing in position and applying a priming coat of red lead paint. Approved From this office.
<u>Brick Work</u>	1- Second Class Brick work using common burnt clay building bricks in foundation and plinth & Superstructure above plinth level up to all levels. cement mortar 1:6 ( 1 Cement: 6 Sand)	<u>Sanitary Fixture</u>	
	2- Second Class Half brick work using common burnt Clay building bricks in super structure above plinth level up to floor all level using first class, building bricks in cement mortar 1:4 ( 1 cement : 4 sand)	IWC	Ornssa Pattern vitreous china water closet squatting pan (Indian type W.C. pan) size 580 mm with foot rest and traps Approved From this office.
<u>Flooring</u> Rooms and Corridors	40 mm thick kota stone slab flooring with 20 mm thick base of cement mortor 1:4 (one cement is to four sand) of size 55 x 55 cm. Tactile tiles as per design for each floor of size 30 x 30 cm.	EWC	Ordinary closet vitreous china wash ,down water closet (European type W.C. pan) with P or S traps Approved From this office.
		Urinal	White vitreous flat back or wall corner type lipped front urinal basin of 430 x 260 x 350 mm and 340 x 430 x 265 mm size with automatic flushing cistern with all type fittings.
Manager's & Computer room	Spartic ceramic tiles 5.5mm thick in flooring (300x300mm size) flooring laid on a bed of 12mm thick cement mortar 1:3( 1 cement :3 sand)	Wash basin	550 mm x 400 mm flat back White vitreous china wash basin with single hole for pillar tap with C.I. or M.S. brackets. Approved From this office.
		<u>Electrical</u>	Concealed PVC wiring.all electrical fittings to be provided as per electrical layout plan. Approved From this office.
Stores	40 mm thick cement concrete flooring 1:2:4 (1 cement:2 sand:4 graded stone. aggregate 20 mm nominal size) laid one layer finished with a floating coat of neat cement.	<u>Pastering</u>	
		Ceiling plaster	6 mm thick cement plaster with cement mortar 1:3 (1 cement :3 Sand).
<u>Dado &amp; Skirting</u> Rooms and Corridors	Kota stone slab 25 mm thick in risers of steps ,skirting dado laid on 12 mm (average) thick cement mortar 1:3 (one cement is to three sand)	Internal & External Plaster	15 mm thick cement plaster Fair and rough side with cement mortar 1:6 (1 cement :6 Sand). Approved From this office.
		<u>Painting</u>	
Manager's & Computer room	Vitrified tiles (300x300mm x 8mm) in grey/colour of required shade in skirting, risers of steps and dados laid over 12mm thick cement mortar 1 :3( 1 cement :3sand)	Ceiling paint	Distempering with dry distemper of approved brand and manufacture (two coats) on decorated wall surfaces to give an even shade.
Stores	22 mm thick cement plaster skirting in all heights with cement mortar 1 :3 (1 cement: 3 sand)	Internal paint	Wall painting (two coats) with acrylic emulsion paint of approved brand and manufacture for interior grade. Approved From this office.
		External paint	Finishing wall with weather proof exterior grade emulsion of approved design (Apexultima) or its equivalant on undecorated wall surfaces (two coats) to give an even shade. Approved From this office.
<u>Roofing</u>	0.60 mm thick prepainted steel sheet in roofing with hot dipped metalic zinc coated sheet with top coat of regular modified polyster (RNP) complete with all accessories as required.including Ridge or hips and Valley as required. Approved From this office.		

MCC NAHAN

Sheet No.	Sheet Title			Drawn by Neha Bisht
15	SPECIFICATION	29 Oct 2018	Notes- 1.All dimensions are in m unless otherwise specified. 2.Level 00 ground floor plinth level corresponds to lvl 102.45.	Architect Hitanshu Jishtu RODIC Consultants

S. No	Description	Rates in Rs. Per sq. mts		Areas in Sq. mts			Total Amount in Rs.
1	<b>RCC FRAMED STRUCTURE</b>						
1.1	Floor ht. 3.35 mts	23500		595			13982500
1.2	Every 0.3 additional height of floor above normal floor height of 3.35mt.	270		595			160650
<b>SUB TOTAL</b>							14143150
2	<b>SERVICES</b>						
2.1	Internal water supply and sanitary installations	4%					565726
2.2	External service connections	5%					707157
2.3	Internal electric installations	12.50%					1697178
2.4	Rich specifications /deeper foundations	10%					1414315
2.5	Extra for:						
2.5.1	Lightening conductors						
2.5.1.1	Upto 4 storeyed buildings	0.50%					70715
2.5.1.2	Telephone conduiting	0.50%					70715
2.5.1.3	Computer conduiting	0.50%					70715
<b>SUB TOTAL</b>							4596521
3	<b>LIFTS</b>	<b>Capacity</b>	<b>Weight</b>	<b>Travel</b>	<b>Price in Lacs</b>		<b>Total</b>
3.1	Passenger lift	8	544 kg	G+4	18		1800000
4	<b>DEVELOPMENT OF SITE</b>	<b>Rates in Rs. Per sq. mts</b>		<b>Areas in Sq. mts</b>			<b>Total Amount in Rs.</b>
4.1	Excavation and retaining wall	10000		445			4450000
4.2	Power supply external and yard light						200000
4.3	External sewer line and water supply						1000000
<b>SUB TOTAL</b>							5650000
5	<b>Water connection</b>						400000
6	<b>Electrical Connection</b>						1000000
7	<b>Overhead Water tank</b>						100000
<b>SUB TOTAL</b>							1500000
<b>TOTAL</b>							27689671
8	Labour cess	1%					276896
9	service tax	5%					1384483
10	Supervision Charges	9%					2492070
11	Contingencies	3%					830690
12	Cost escalation charges assuming completion period of 2 yrs	10%					2912978
<b>SUB TOTAL</b>							7897117
<b>TOTAL AMOUNT</b>							35586788